

Temple Way Underpass

Part 2 Design Brief

March 2023



Executive Summary

Redcliffe & Temple BID commissioned Streets Reimagined to undertake a research and analysis study focussed on the Temple Way Subway in central Bristol. The findings from this are set out in report 1.

In this second report, the key design objectives are presented arising from the analysis and research with a proposed delivery plan is presented, including identifying the responsibilities of each stakeholder to see these changes implemented.

The key design objectives can be summarised as follows;

- Review and update maintenance schedules
- Review and update lighting
- Review and update signage to more clearly articulate the intended movement function of the subway and also to provide wayfinding information
- Commission artwork to counteract the visual impact and cyclical nature of graffiti / tagging
- Develop design proposals to re-configure the layout around each subway entrance including the removal of concrete spiral ramps and staircases, integrating soft landscaping / sustainable urban drainage systems and provide clear and continuous connections for all users.

Contents

Design Objectives	4
Wayfinding Signage	5
Lighting	6
Artwork	7
Re-configure Entrance Layouts	9
Action Planning	10

Design Objectives

Drawing on the analysis the following design objectives for the subway have been identified;

Short - Medium term

1. Review and Update Maintenance Schedule
2. Commission artwork to counteract the visual impact and cyclical nature of tagging
3. Review and improve Wayfinding Signage
 - Review and confirm approach to segregated provision with reference to recent changes / 'design language' set on the Bristol to Bath Railway Path
 - Install new wayfinding 'totems' at start and end of subway
4. Update and Upgrade Lighting
 - Review the lighting currently used in the subway and upgrade to better quality lighting that is less susceptible to vandalism

Medium - Long Term

5. Re-configure the layout around subway entrances.
 - The removal of the concrete spiral ramps
 - Integrate soft landscaping and sustainable urban drainage systems
 - Provide clear and continuous connections for all users

Wayfinding Signage

The study identified that there was a need for improved navigation and wayfinding in this location which is located at a nodal point of routes between the city centre and the main train station.

It would make sense for this to be delivered as part of the wider Bristol Legible City wayfinding project because this will ensure they fit into a wider coherent wayfinding system and will therefore be more user friendly.

Also, due to the ongoing funding model for the wayfinding signage (via advertising revenues) it will ensure they are incorporated into an established maintenance programme.



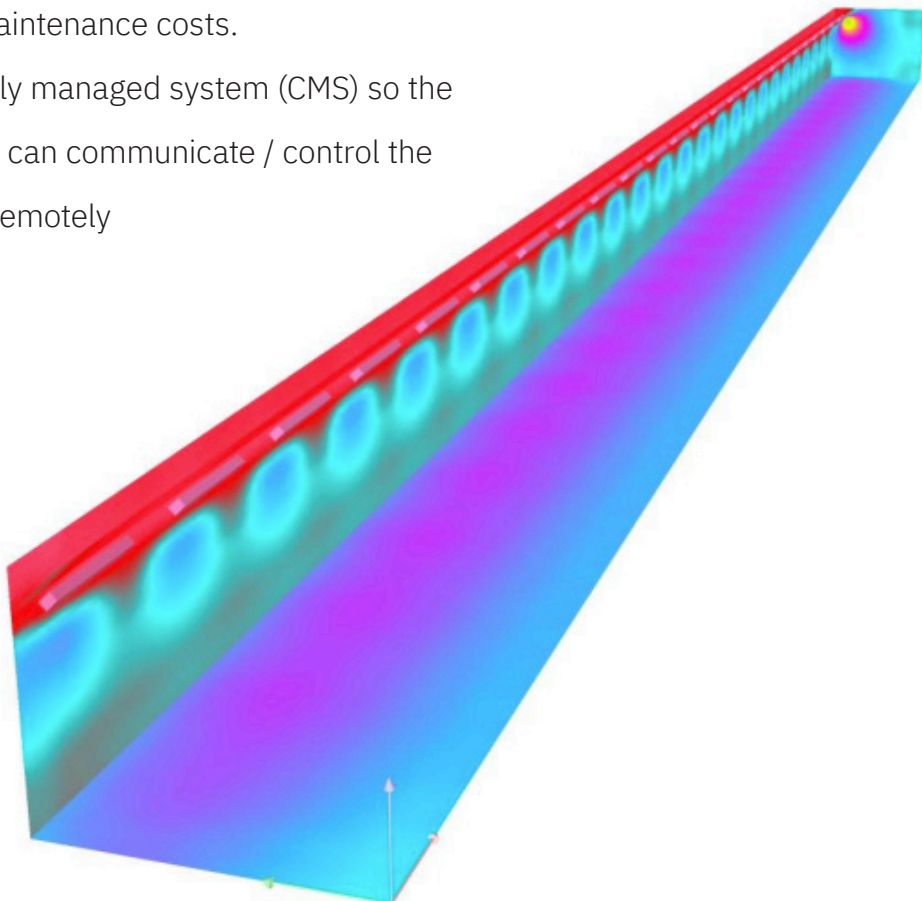
ABOVE and BELOW: Examples of a Monolith Wayfinding Signage at nearby Bristol Temple Meads.



Lighting

The council's lighting contractor (Rochtest) has developed a proposal for the subway which would see the current lighting upgraded. This will include new fittings and a 'sacrificial film' which will make maintenance easier. Key benefits can be summarised as;

- Significantly better lighting levels
- Better light quality and colour making the environs feel safer
- Lower energy consumption.
- Lower maintenance costs.
- A centrally managed system (CMS) so the authority can communicate / control the fixtures remotely



Artwork

As noted during the analysis process, the subway area suffers from persistent graffiti and ‘tagging’ and it is challenging to resource the level of maintenance that is required.

Therefore, to help address this issue it is proposed that artwork is commissioned to visually counteract and discourage ‘tagging’.

After consulting with an experienced muralist used to working in urban environments, it was concluded that it may be challenging to paint inside the subway because it is likely to need regular graffiti removal which would also damage the mural. Also, it would be challenging to paint on to shiny tiles which have already been painted with anti-graffiti paint.

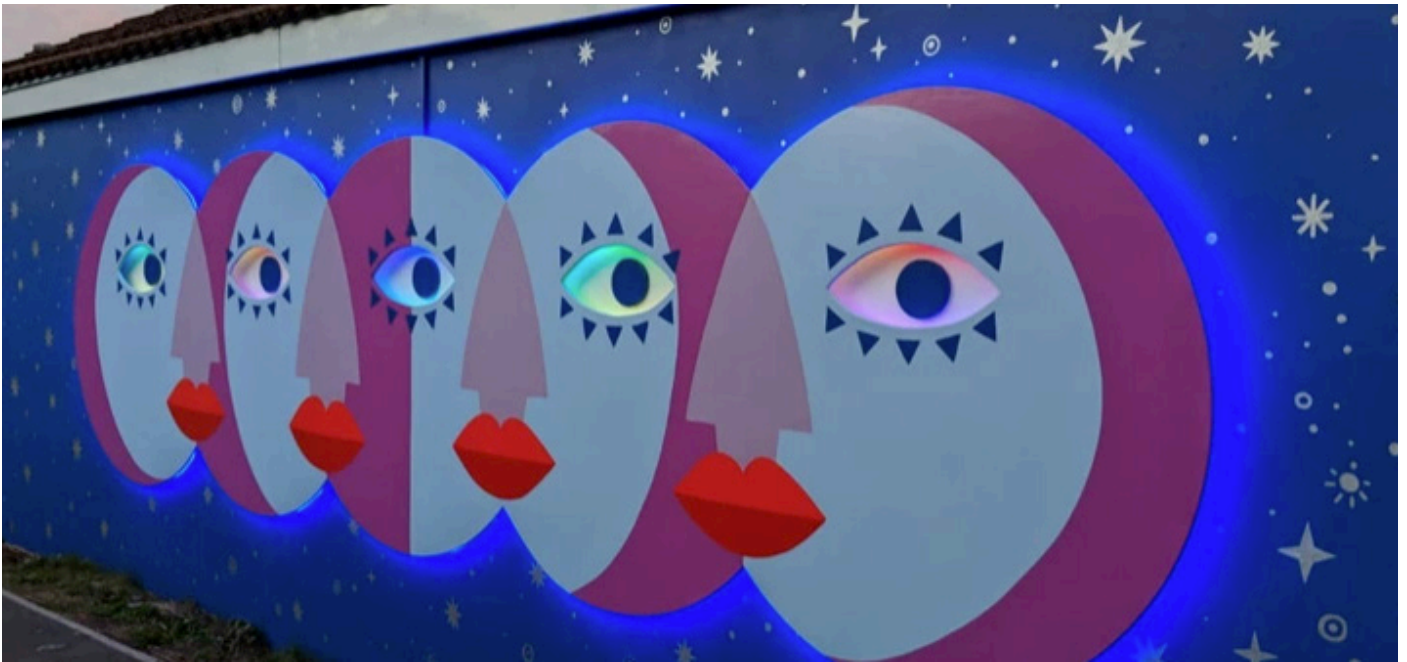
Therefore, it is proposed to focus murals on the entrance areas as shown below in an example from Bournemouth.



Example of mural painted by Zoe Power at entrance to subway in Bournemouth

Artwork

Within the subway it is proposed that an approach is adopted which utilises back lighting of cut out metal shapes that are attached to the walls, an example of which can be seen below.

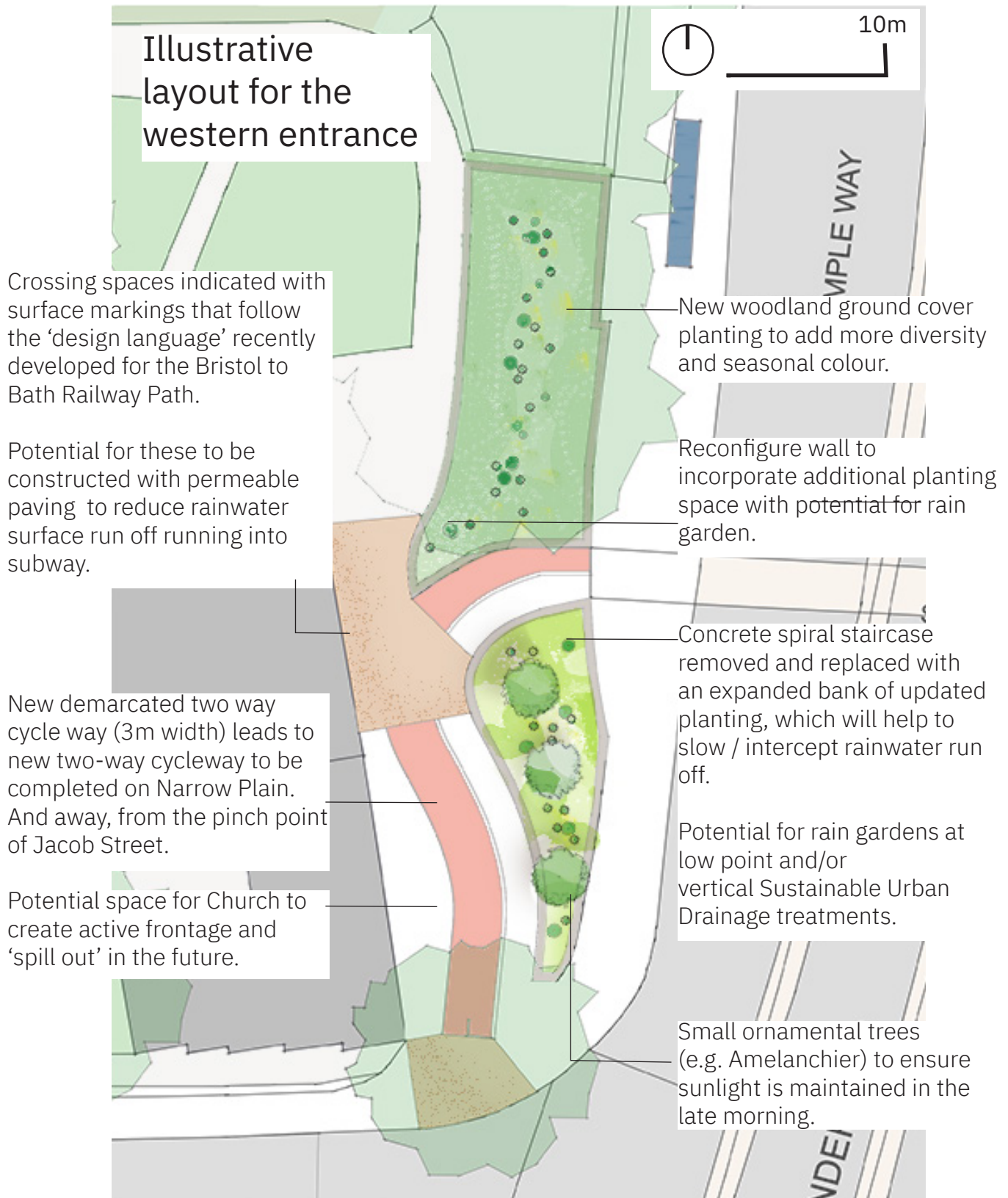


Electric Moon by Zoe Power



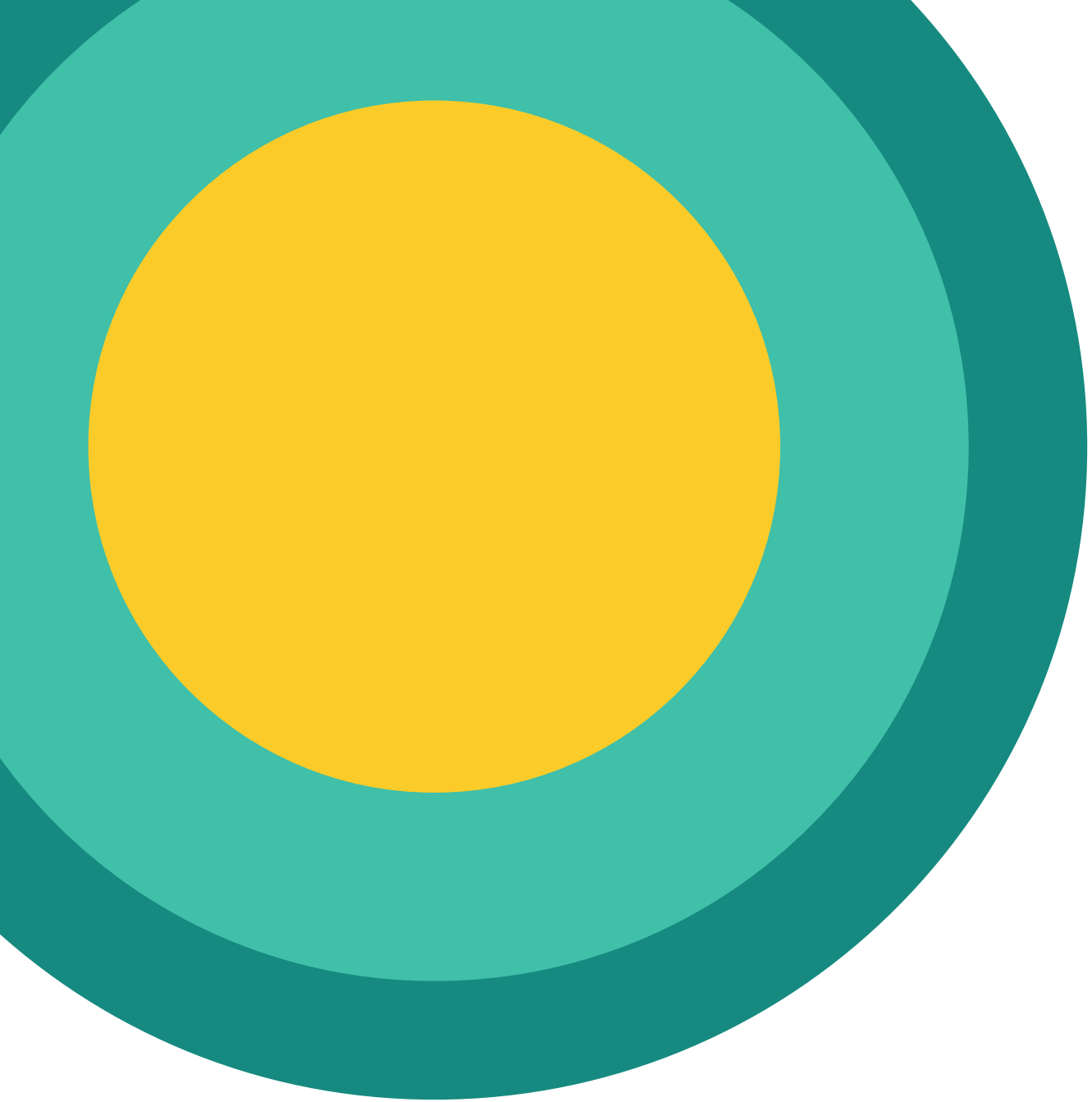
Sketch concept developed by Zoe Power for Temple Way Subway.

Re-configure Entrance Layouts



Action Planning

Action	Who	Cost Estimate (where available)	Timescale
Review Maintenance Schedule	Bristol City Council Highways	tbc	Short-term (next 6 months)
Litter / Fly-tipping clearance from western entrance	Bristol City Council	negligible	Short-term (next 6 months)
Upgrade lighting to be less vulnerable to vandalism and to provide better quality lighting.	Bristol City Council Highways via term contractor Rochtest	£24k + VAT (fittings only) - (based on quote from Rochtest)	Short-term (next 6 months)
Commission artwork comprising back lit metal shapes for internal spaces and murals for entrance.	Bristol City Council Public Arts Team / via arts commissioning consultant.	Circa £50k (to include commissioning / management process, artist fees and manufacture of materials)	Medium-term (next 24 months) (to be considered alongside any upgrades to lighting and entrance re-configuration)
Install wayfinding 'Monolith' signage as part of Bristol Legible City programme at each entrance.	Bristol City Council Highways (via support from wayfinding consultant)	Circa £15-20K per monolith (including installation, planning, mapping data and contribution to ongoing maintenance)	To be planned as part of delivery of public realm improvements for Number 1 Temple Way development.
Re-configure Eastern entrances in front of Number 1 Temple Way.	Developer of Number 1 Temple Way - Mission Street.	tbc - to be completed as part of 278 agreement	Medium-term (next 24 months)
Re-configure Western entrances in front of Number 1 Temple Way	Bristol City Council or third party contractor.	Circa £250k- 300k	To be planned and completed as part of delivery of public realm improvements for Number 1 Temple Way development.



www.streets-reimagined.com