

BID ANNUAL REVIEW & UPDATE MEETING

8 November 2023

View the
full Annual
Report
here:



WELCOME

Jon Bower

Chair of Redcliffe & Temple BID Advisory Board

Introduction to One Portwall Square

Steve Taylor, AHMM

BEFORE AND AFTER



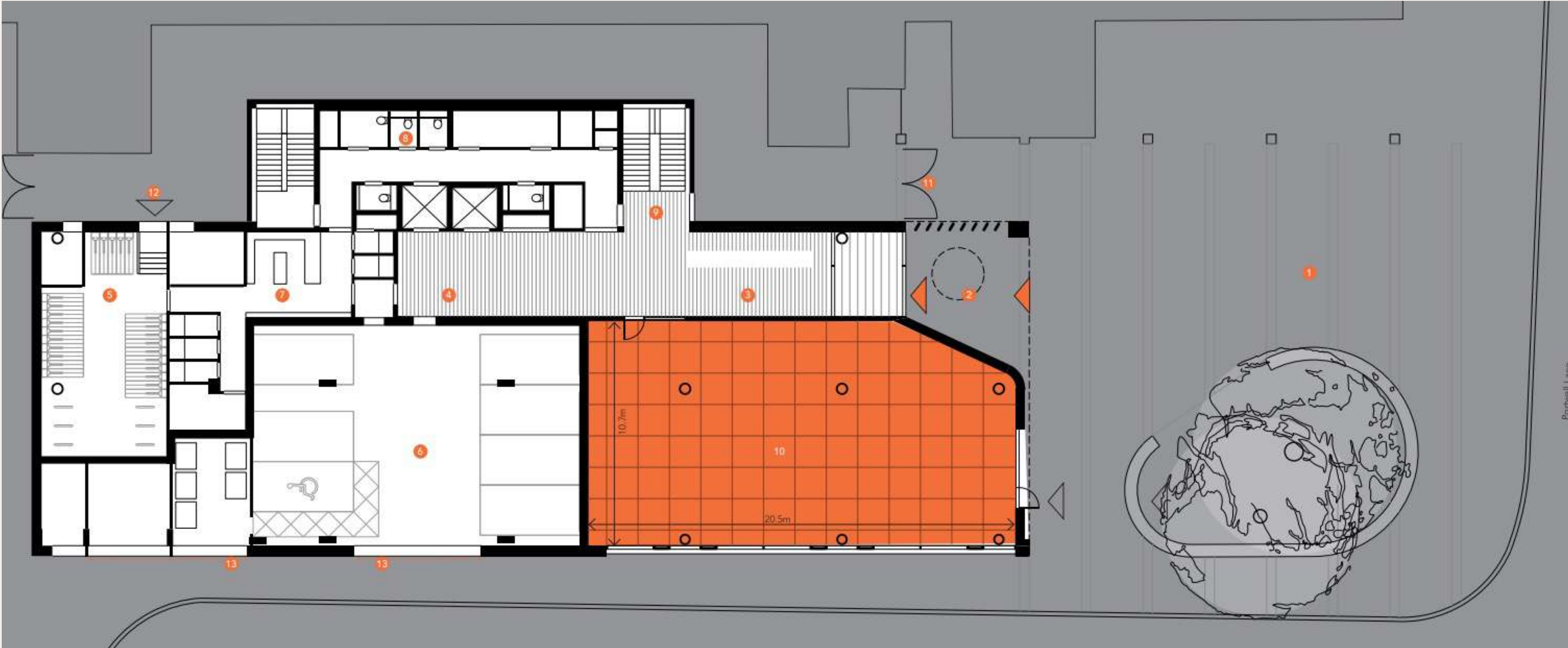
ONE
PORTWALL
SQUARE

ONE PORTWALL SQUARE



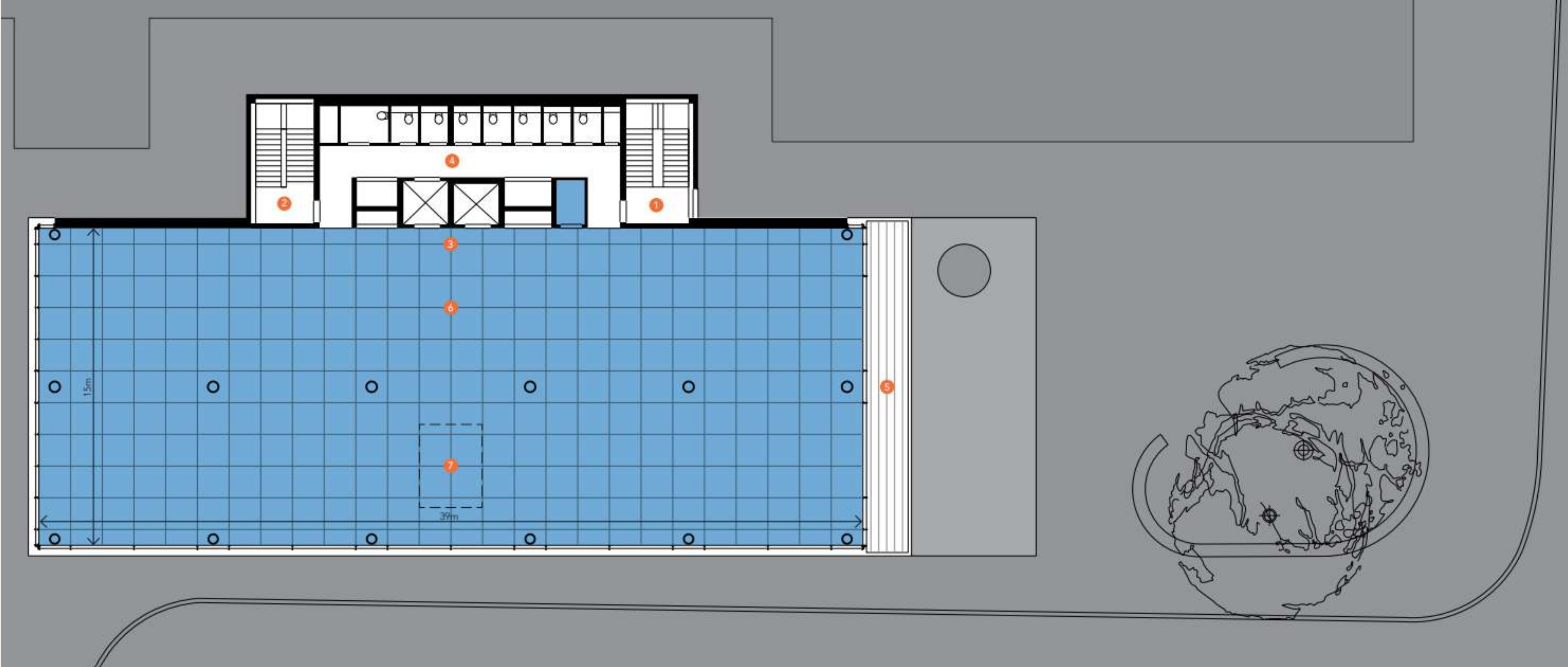
ONE
PORTWALL
SQUARE

GROUND FLOOR PLAN

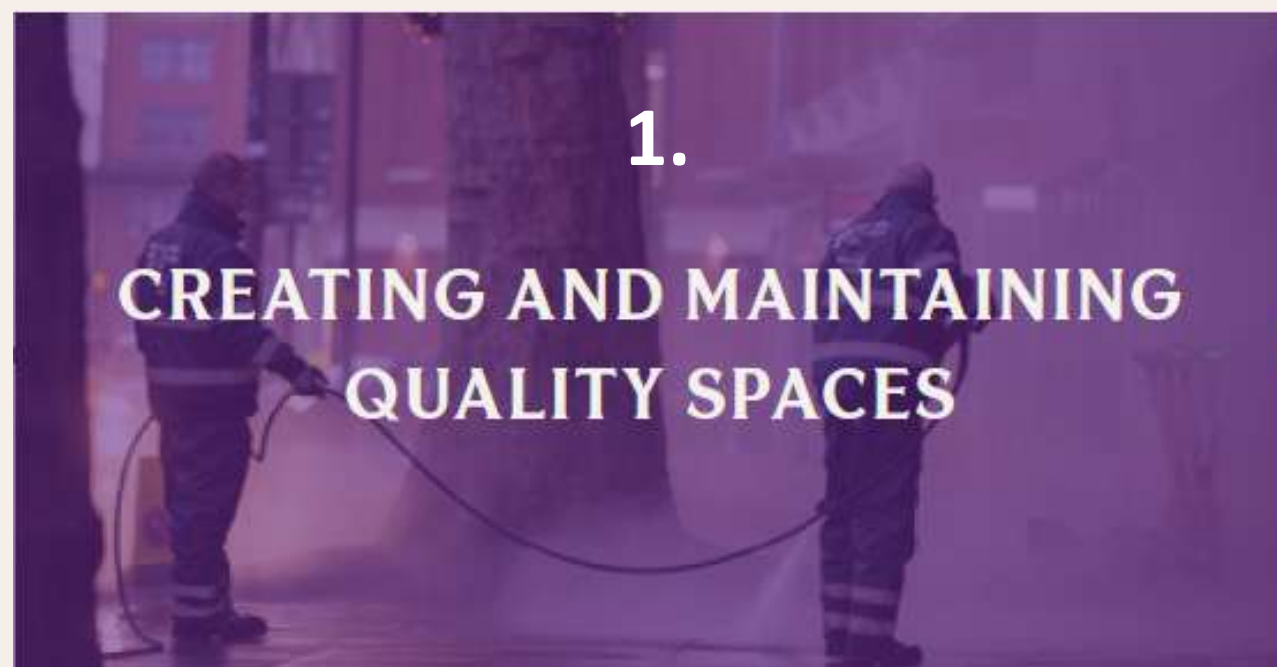


ONE
PORTWALL
SQUARE

TYPICAL FLOOR PLAN



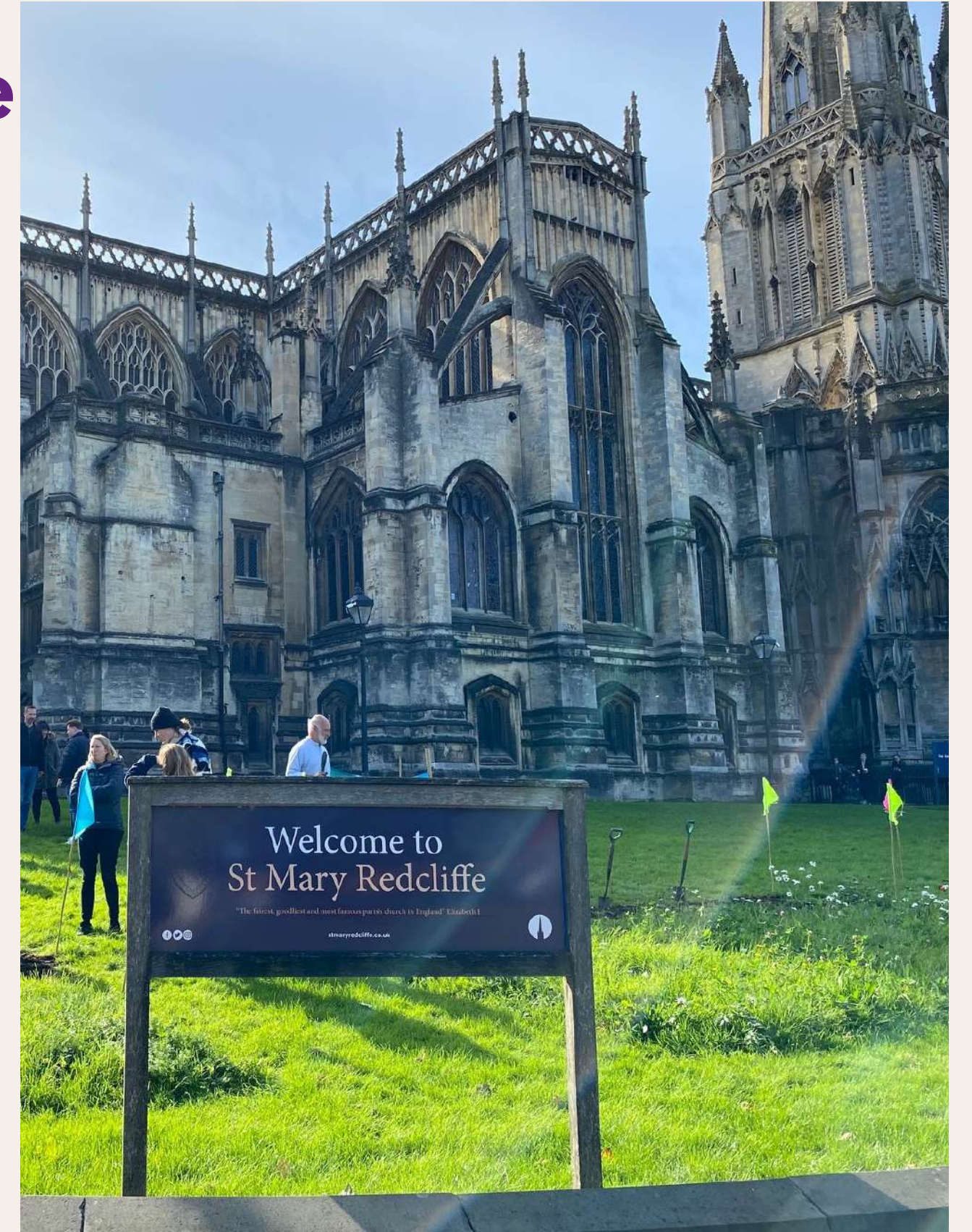
ONE
PORTWALL
SQUARE



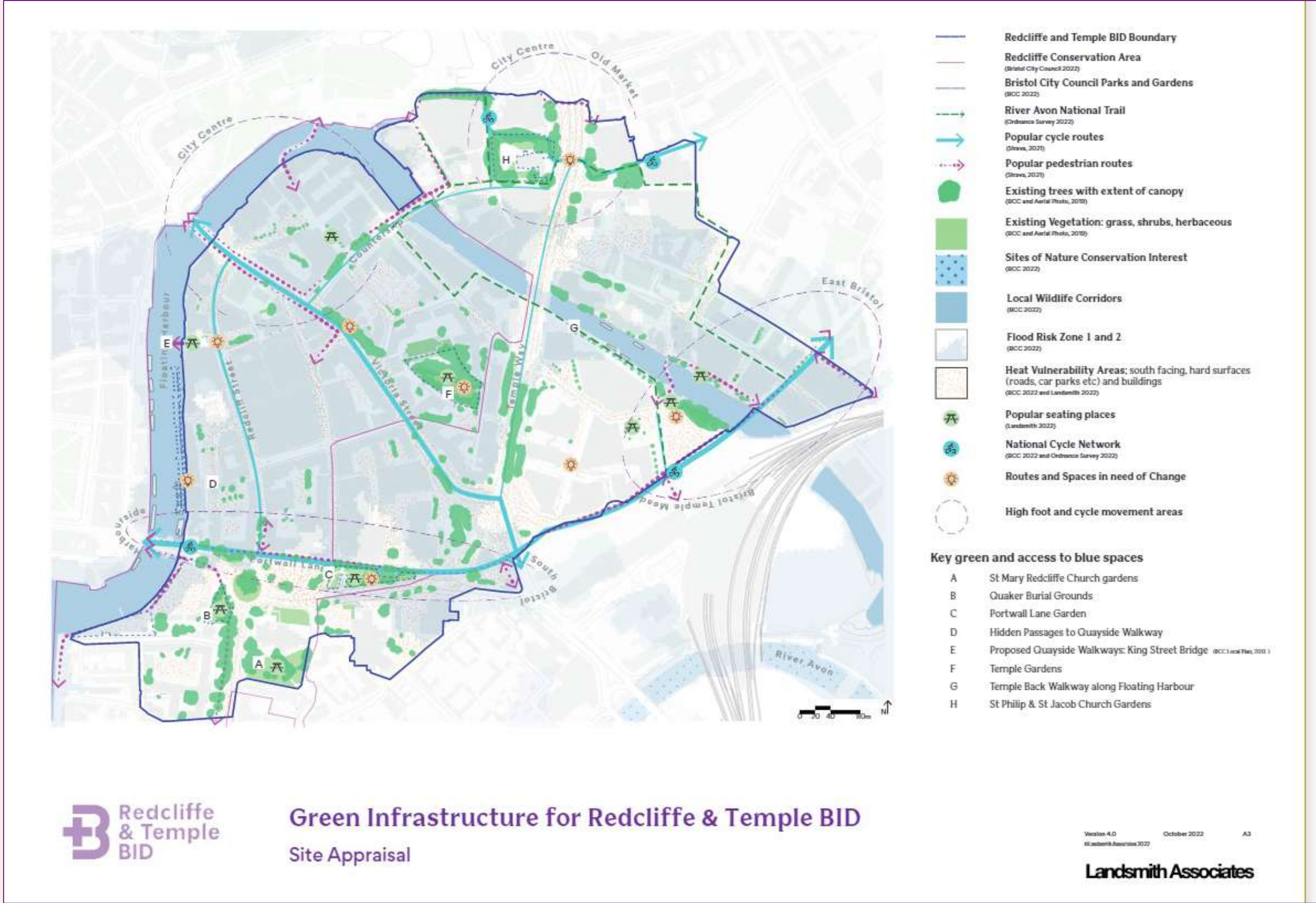
Theme 1: Creating & maintaining quality spaces



Theme 1: Creating & maintaining quality spaces



Theme 2: Improving Sustainability & the Environment



Theme 2: Improving Sustainability & the Environment

Partnership and B...



Theme 2: Improving Sustainability & the Environment

Dr Bike is hosted monthly at:
Finzels Reach
Glass Wharf
and other various locations

Redcliffe & Temple BID
Dr Bike Survey Results 2023

Sep 22 - Aug 23
334
Bikes serviced

1 in 4
Of people surveyed said that the DR Bike sessions have meant they can now cycle to work

84%
Said that their experience using Dr Bike was excellent

98%
Said that they would recommend the Dr Bike service to their colleagues

Contact us
tom@redcliffeandtemplebid.co.uk

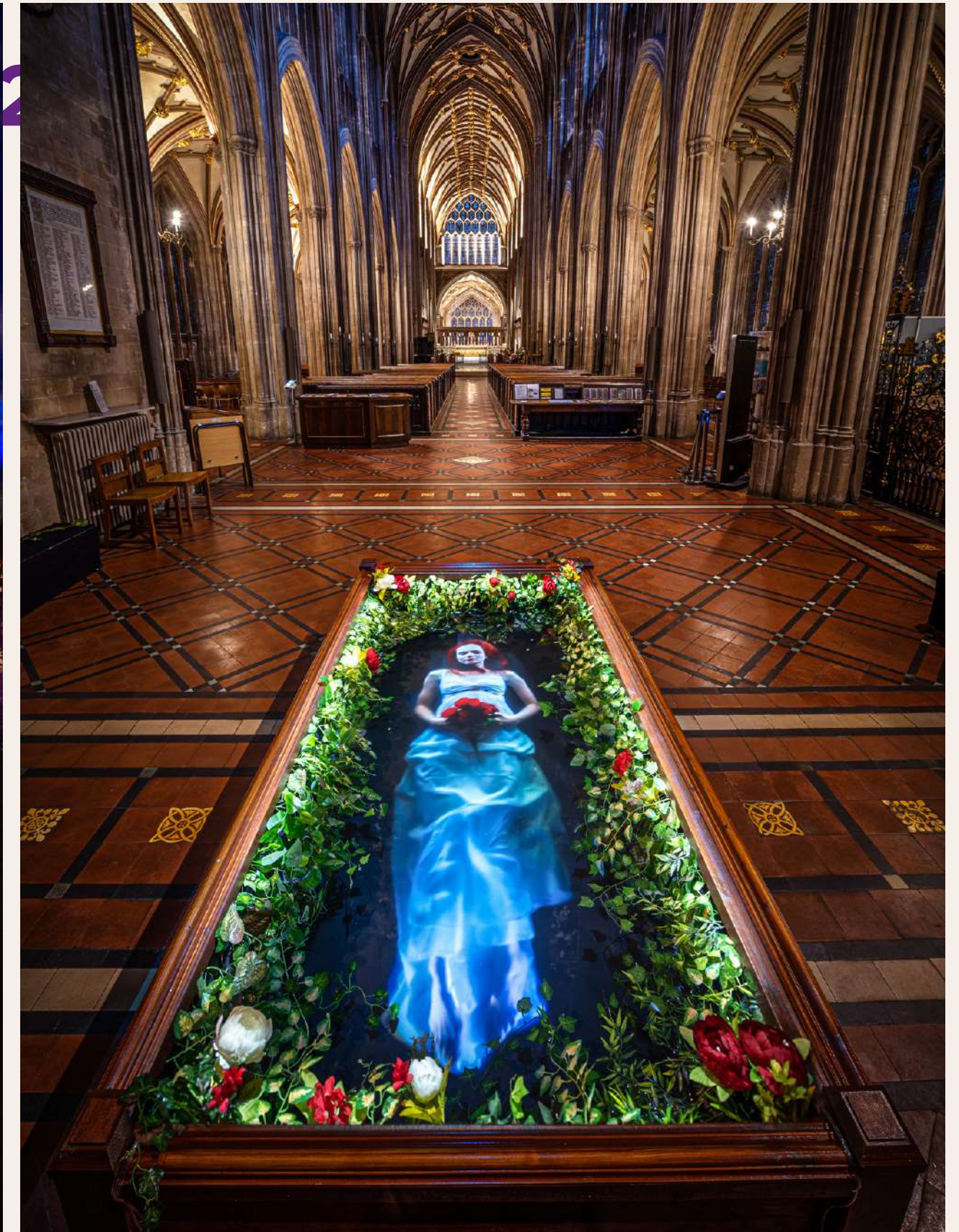
98%
Said that since using Dr Bike, they have increased or maintained the use of their bike

Theme 2: Improving Sustainability & the Environment

Lunchb



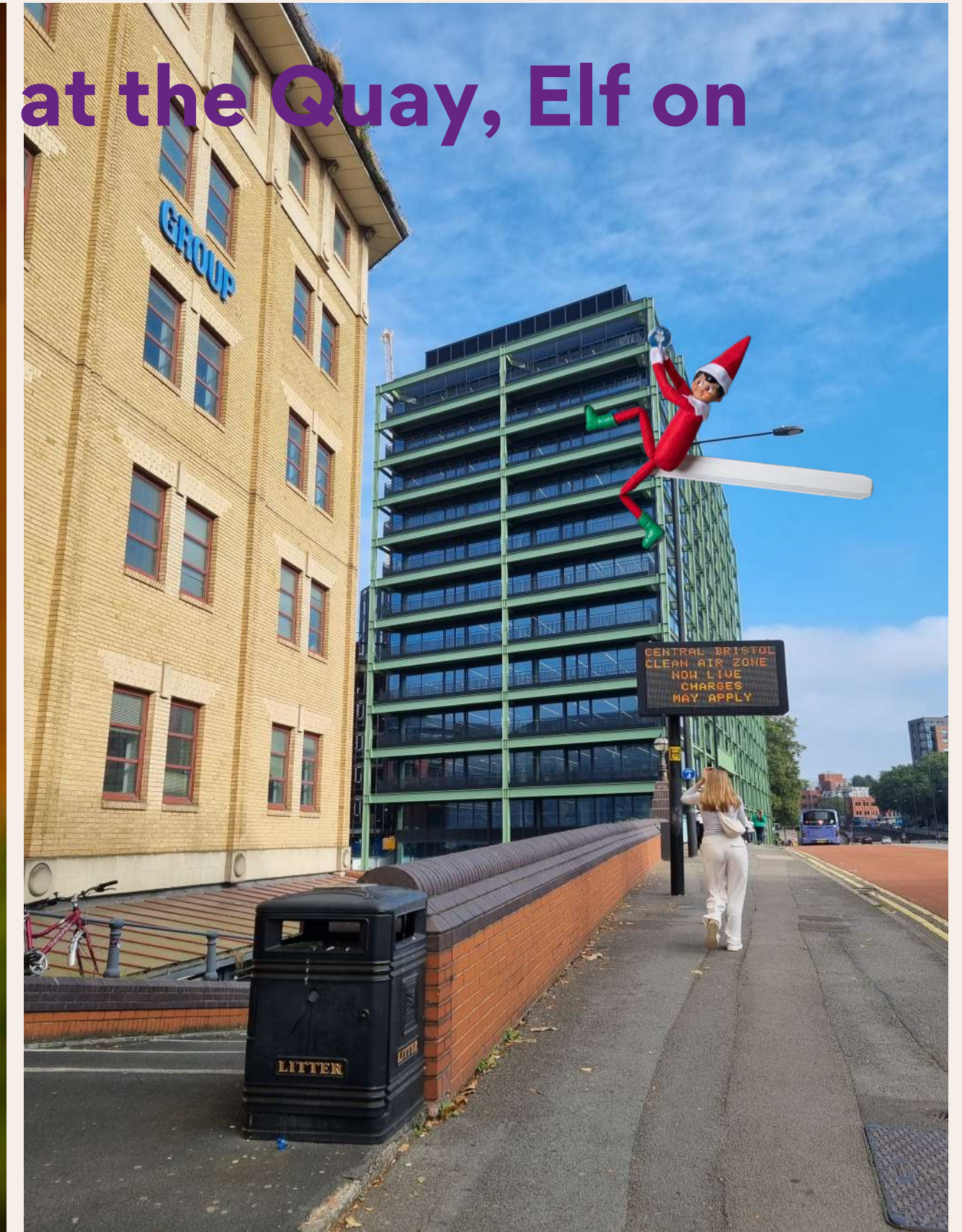
Theme 3: Creating & Promoting a Vibrant Place



Theme 3: Creating & Promoting a Vibrant Place




Theme 3: Creating & Promoting a Vibrant Place



Theme 3: Creating & Promoting a Vibrant Place



Marketing



Redcliffe & Temple BID
Vibrant, thriving, sustainable, inspirational and welcoming
www.redcliffeandtemplebid.co.uk

Non-profit Organizations · Bristol, Bristol · 1,216 followers · 2-10 employees


Izzy & 47 other connections follow this page

[Following](#) [Visit website](#) [More](#)

[Home](#) [About](#) [Posts](#) [Jobs](#) [People](#)

About

The Redcliffe & Temple Business Improvement District (BID) is a business-led initiative which exists to improve the Redcliffe and Temple area of Bristol. Our vision is to develop Redcliffe ... see more



Redcliffe & Temple BID

Redcliffe & Temple BID


109 followers · 89 following

The BID exists to improve and enhance the Redcliffe and Temple area for the benefit of the community

Redcliffe & Temple BID · 6h · 🌐

Ready...steady... learn! 🍎

Sign up to our free learning hub and complete an online learning course any time



redcliffeandtemplebid

Following Message +

Redcliffe & Temple BID

Public service

Our vision is for a vibrant, thriving, sustainable, inspirational and welcoming Redcliffe and Temple!


#LoveBristol

linktr.ee/redcliffeandtemplebid

Followed by bristolcocktailweekend, sabi_in_bristol, bristol_light_fest + 23 more

LHG Run ... Yoga Unicornfest Sweet Mo... Gardening Gift Card Climate A...

404 posts 935 followers 320 following



Theme 4: Connecting & Representing Businesses



Theme 4: Connecting & Representing Businesses

Consultations Responses



Theme 4: Connecting & Representing Businesses



Redcliffe & Temple BID | Business Improvement District | Broadhead Bristol

Home Today's Events Modules Books Support

Live Now: Chair Yoga at your Desk - 9:30 AM to 9:50 AM SIGN UP

LEARN - PERFORM - SUCCEED

Training Hub

Welcome to your FREE learning platform, open to local business and employees.

START LEARNING →

- Project Management 18 Events
- Bristol Courses 5 Modules
- Business Essentials 18 Events
- Compliance 14 Events

WHAT'S ON

Upcoming Events

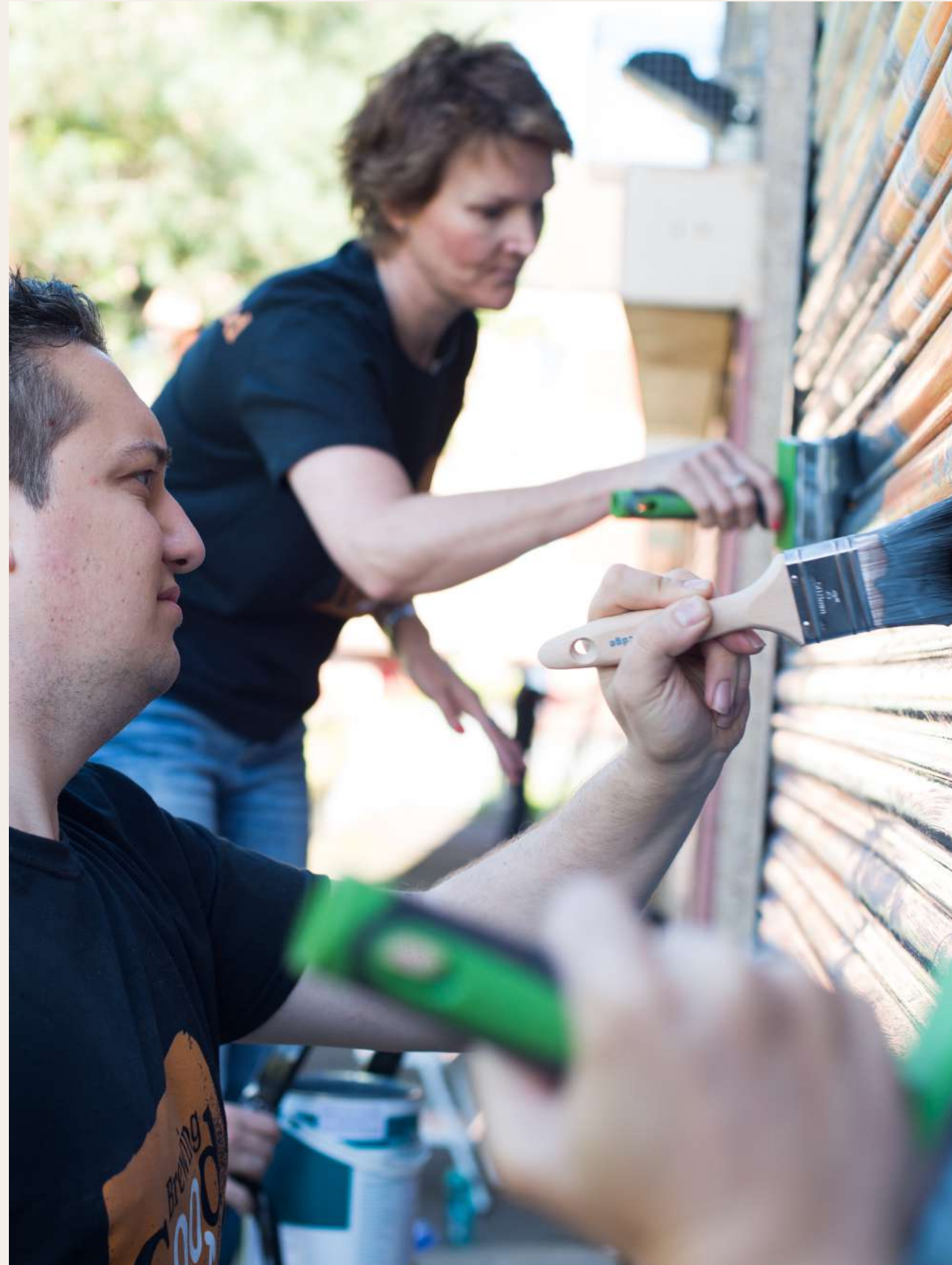
VIEW OUR MODULES →

- MICROLEARNING**
4 EVENTS **LIVE**
Chair Yoga at your Desk
This 20 minute chair yoga session at your desk will help to prevent and rid you of any aches and pains caused by too much sitting...
- MENTAL WELLNESS**
2 EVENTS
Understanding and Overcoming Stress, Fear and Anxiety
Stress is only a "bad" thing when it becomes disproportionate and misplaced. Understand the types of stress we experience...
- CUSTOMER SERVICE EXCELLENCE**
2 EVENTS
Delivering Customer Service Excellence
How do we put the needs and requirements of a client first, ahead of anything and everything else? Helping you deliver excellence to...



Theme 5: Building a Safe & Caring Community

Neighbourly



REDCLIFFE & TEMPLE BID > CURRENT CAMPAIGN >

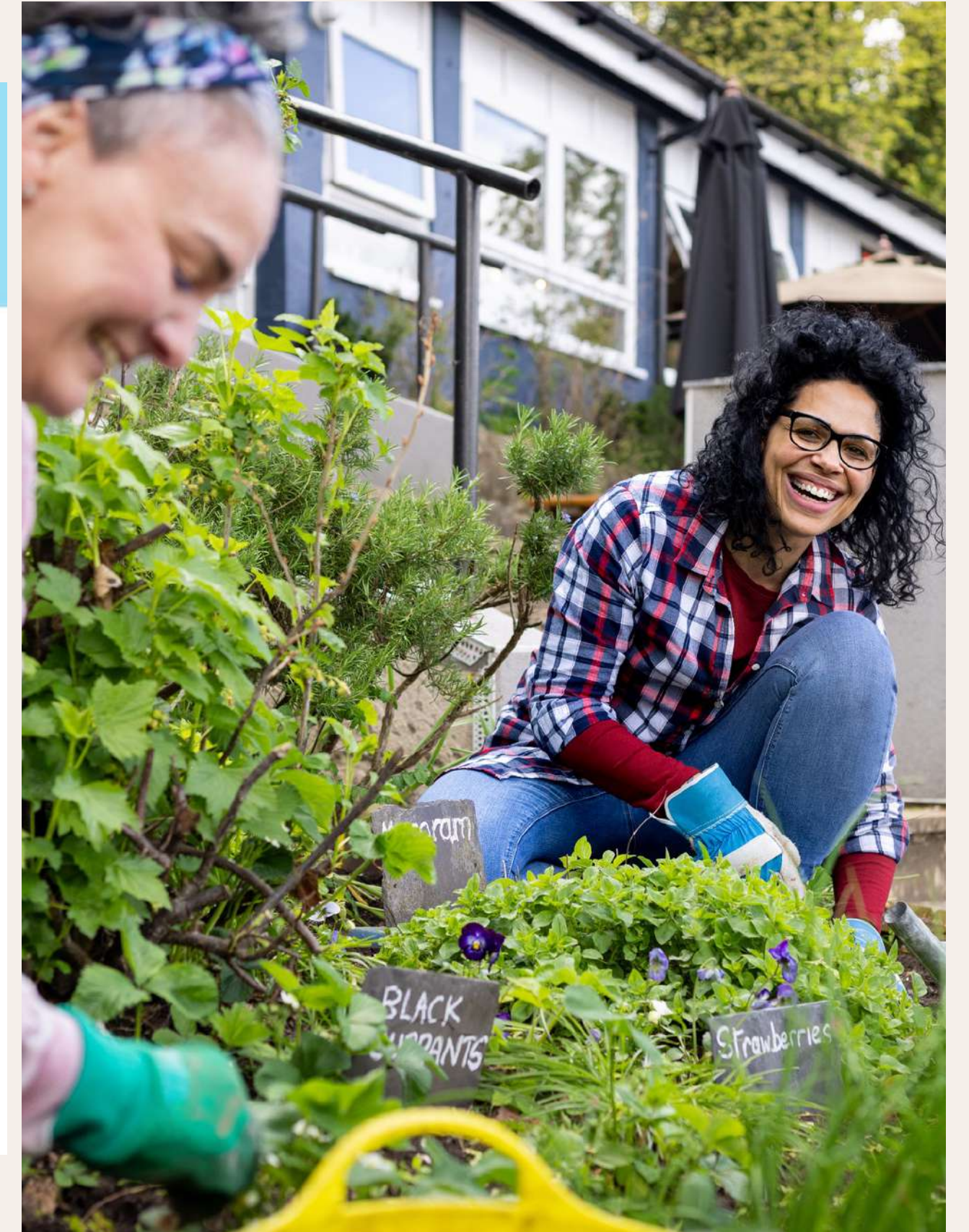
Redcliffe & Temple BID building a safe and caring community

Employees of businesses within the Redcliffe & Temple BID area can register for free at any time to get involved with local charity projects and initiatives that support our local communities.

How to be a part of this campaign

Get involved

Scroll down to see the live Volunteering Opportunities we have available for Redcliffe & Temple BID and sign up with your volunteering code. If you are unsure of your code, please contact us here: www.neighbourly.com/help



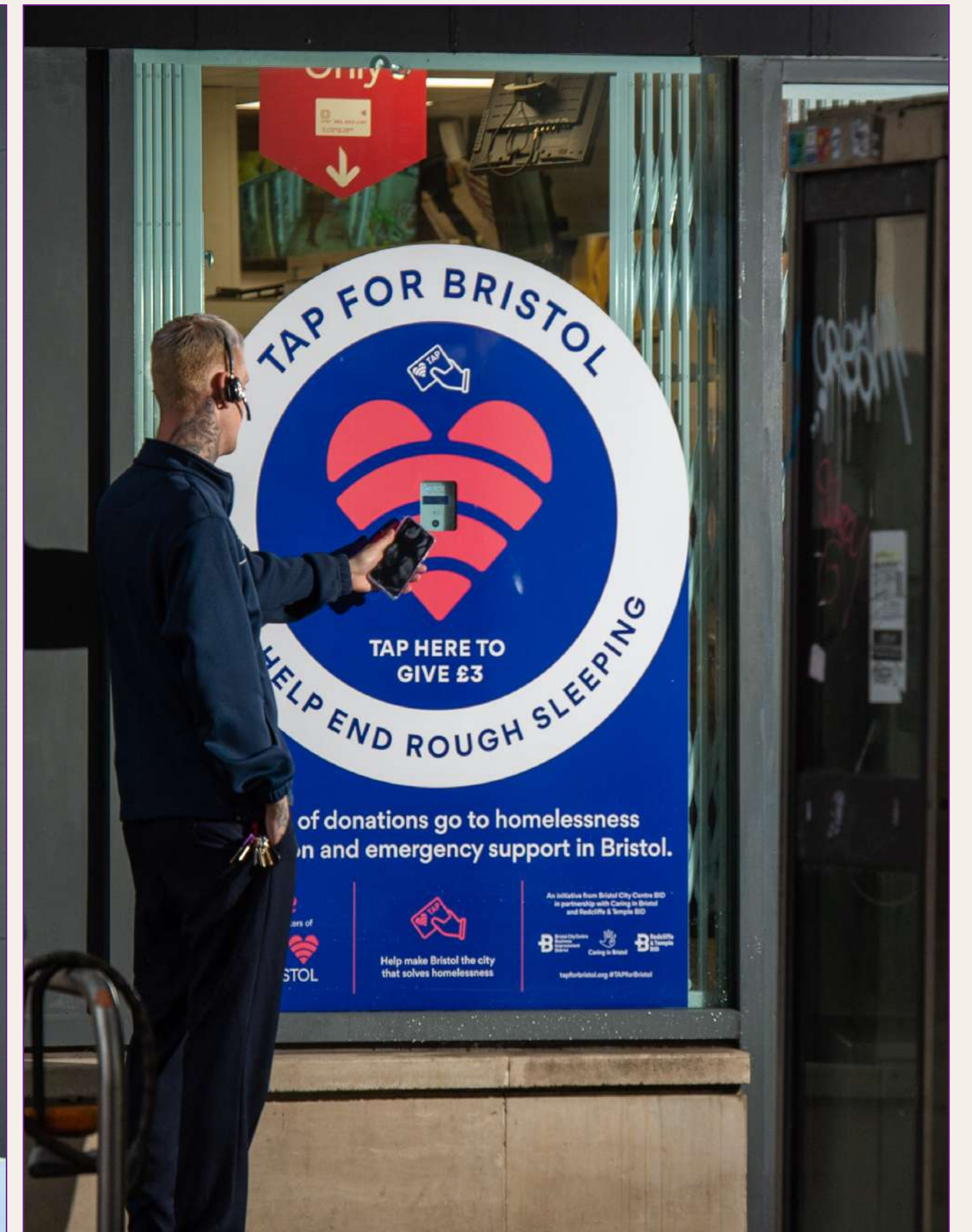
Theme 5: Building a Safe & Caring Community

Safety and strategic partnerships



Theme 5: Building a Safe & Caring Community

TAP for Bristol



**Redcliffe & Temple BID and Babbasa:
Helping to Build an Equitable Society & Transform
Young Lives**
Sangeetha Wynter, Babbasa



Our Vision

A world where young people living in areas of disadvantage are inspired and able to realise their employment and enterprise ambitions, irrespective of where they live, their nationality, ethnicity, disability, gender, race, sexuality or faith

Our Mission

To inspire and support young people from low income and ethnic minority communities to pursue their professional ambitions



BRIS – Babbasa Recruitment & Inclusion Services



- Recruitment
- Workplace Inclusion Services
- EDI Training

Workplace Inclusion Health-checker

- This survey is used to gather basic EDI related data across a range of parameters. Allowing us to gain an insight into you organisation.
- Babbasa's Training and Inclusion manager will analyse the data.
- Recommendations are shared.
- A bespoke development plan outlining the EDI training/advisory will be created, with costs and timings.



Recruitment

- Marketing & Vacancy Promotion Support.
- Talent Acquisition for work experience, short term and permanent employment opportunities.
- Advisory support to help create more inclusive applications and interview practices



Partnership includes

- Initial investment for 15 organisations to complete Babbasa Workplace Inclusion Health Checker and receive a personalised EDI Development Plan
 - General findings/trends also disseminated to membership
- Follow up investment for 5 of those organisations who are ready to recruit an underrepresented young person via Babbasa's recruitment service



Get involved!

Next steps:

Email expression of interest to
steve@redcliffeandtemplebid.co.uk



Mid-term survey headlines

- Conducted as we're mid-way through our BID term – to review progress and shape priorities
- Over 100 respondents representing 57 businesses
- Open to fill in from 25th Sept – 20th October
- Some positive feedback and opportunities to consider
- Working our way through detailed feedback

Topline results - Positives

- 90% of respondents strongly agreed or agreed that R&T is a desirable place to work
- Over 75% of respondents strongly agreed or agreed that R&T is a well-maintained area
- Traffic speeds and vandalism ranked the lowest concern

‘Really good to be kept informed with these emails, the Dr Bike is brilliant, but often booked up, would be good to have more sessions.’

‘The BID work is great and knowing everything that you do makes us more part of the community that is the BID. Everything from street cleansing to food markets and networking events are great so please keep it up!’

‘Really enjoy the newsletters and updates with free events and activities we can take part in.’

‘I loved the walking tours ! Great way to learn about the area and get to know others in it’

Topline results - Opportunities

- Nearly 50% of respondents don't think the area has enough green space
- Rough sleeping/begging and pedestrian/road safety ranked highest concern
- The average answer to 'How informed do you feel about our work in the BID area' returned an average answer of 4/10
- Two-thirds follow us on social media – please give us a follow:
 - LinkedIn Instagram Facebook

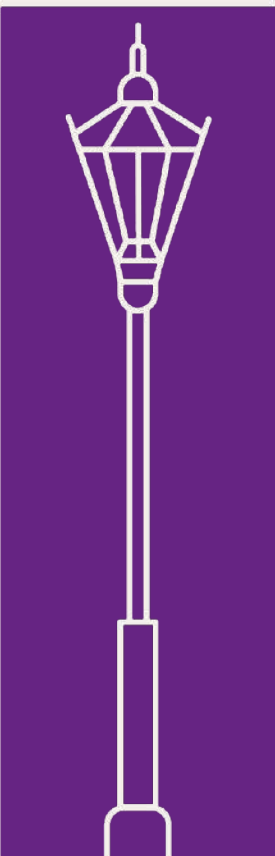
'Graffiti is still a huge problem despite the great work of the BID street cleaning team'

'Some concerns re. vehicle theft and the safety of my female colleagues in the evenings'

Next steps

1. Thorough analysis of results
2. Review and refine our BID project plans to align with actionable opportunities
3. Exploring opportunities to better share our work and engage a wider audience

**ANY
QUESTIONS?**



THANK YOU

View the
full Annual
Report
here:

